

Symantec Replication Exec™ 3.1

CONTINUOUS PROTECTION FOR SQL AND EXCHANGE SERVERS

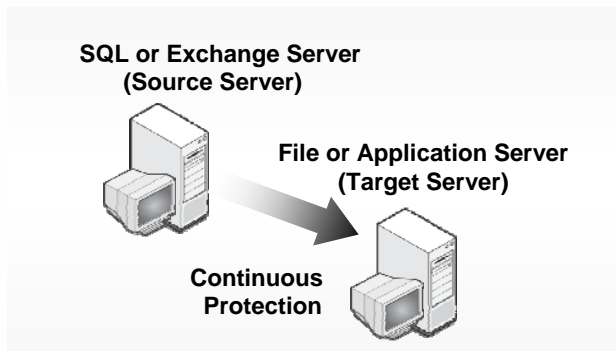
SQL and Exchange databases have quickly become the life-blood of business activity for many organizations. Yet most organizations protect this data infrequently, typically once a day, leaving the organizations exposed to loss.. As threats of cyber terrorism, data corruption, and hardware failure continue to heighten, many organizations are finding that they simply cannot tolerate any downtime associated with these production databases.

Replication Exec

Replication Exec is a simple, easy-to-use solution that helps ensure continuous, around-the-clock protection of Microsoft SQL and Exchange applications. By ensuring this data is always protected and readily accessible, Replication Exec succeeds in minimizing any downtime resulting from application server loss.

Continuous Protection for Open Databases

Replication Exec provides real-time data protection by replicating critical application data to an offsite or secondary server. It maximizes efficiency by only replicating the changed bytes within each data file. This allows administrators to always maintain a complete record of each Exchange or SQL server that can be recovered quickly and easily with minimal downtime.



Replication Exec helps ensure that an exact replica of a SQL or Exchange server is continuously maintained on a secondary server. Organizations can quickly recover this data in the event of disaster or unplanned migration

Winner! 2005 SQL Server Readers' Choice Award

KEY BENEFITS

- Continuous protection for SQL and Exchange databases
- Enables timely recovery of Exchange and SQL data
- Minimizes downtime due to unplanned migration

PRODUCT HIGHLIGHTS

- **Easy to Use** - Simple and intuitive interface has the same look and feel as Backup Exec.
- **Set it and Forget It** - Automated technology, application data is continuously protected
- **Centralized Management** - Powerful administration console provides extensive monitoring and alert notification.
- **Flexibility** - Replication can occur continuously or on a scheduled basis, during off-peak hours.
- **Bandwidth Throttling** - Administrators can allocate a maximum amount of bandwidth that can be utilized for replication.
- **Write Order Fidelity** - Ensures that the integrity of the data is never compromised.
- **Byte-Level Changes** – Maximizes efficiency by only replicating the changed portion of data files.
- **Network Outage Resiliency** – In the event of a network outage, replication will continue right where it left off once connectivity is restored.
- **Open file protection** – Files are protected even as they are modified or updated.
- **Protects Local and Remote Servers** - No requirement for physical proximity between the Source and the Target servers.
- **Content Distribution** - Administrators can seamlessly distribute files from one to many remote servers, simultaneously.

PART OF THE BACKUP EXEC SUITE

Replication Exec now integrates with Backup Exec for Windows Servers for simplified management, enabling administrators to monitor replication from within the Backup Exec console.

The Backup Exec Suite is the Gold Standard in Windows Data Protection, delivering continuous data protection and the fastest disk-based data protection. The Backup Exec Suite makes today's Windows environments simple to grow – and simple to manage.

Planned Migration

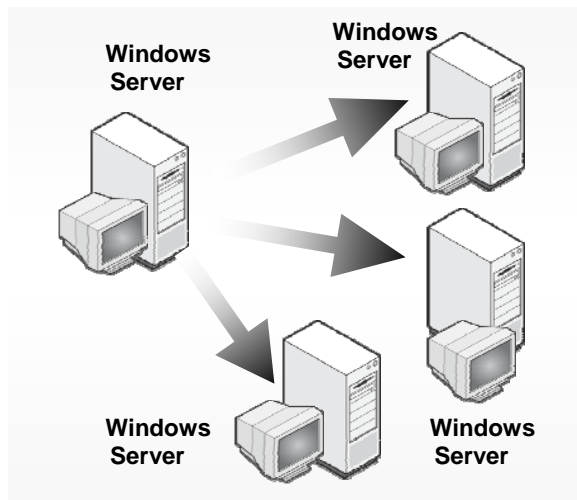
Replication Exec can be used effectively to minimize downtime associated with a planned migration. For example, if a business plans to upgrade an existing server or migrate their Exchange or SQL software and database files to another server.

Centralized Backups

For distributed environments with multiple application servers, Replication Exec can eliminate the hassle and the expense of having to backup each server locally. Administrators can simply replicate SQL or Exchange data from the remote application server to a central Target server where the data can be routinely backed up and protected.

Content Distribution (One-to-Many Replication)

Replication Exec's flexible technology enables administrators to seamlessly distribute files from a central server to multiple servers simultaneously. Administrators can ensure that the right information gets to all the right people quickly and efficiently.



Replication Exec enables administrators to seamlessly distribute content from a central server to multiple remote office servers.

Flexibility

Replication Exec is designed to help administrators easily integrate and customize replication to their specific environment. Administrators can select which files to replicate, when replication is to occur (continuous or scheduled), and how much bandwidth to use in the process (bandwidth throttling). This helps maximize utilization of network and storage resources while minimizing impact on business operations.

Symantec Corporation

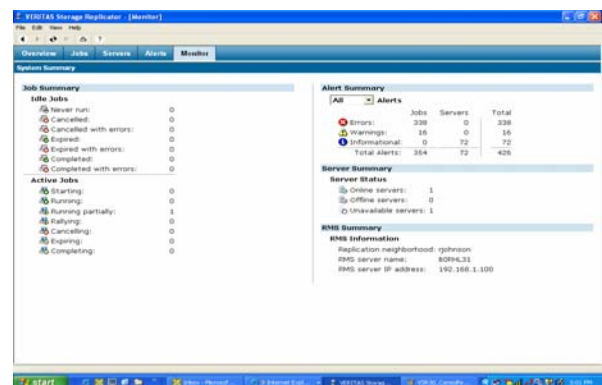
20330 Stevens Creek Blvd.
 Cupertino, CA 95014
 +1 408 517 8000 or 1 866-837-4827

Easy Installation and Centralized Management

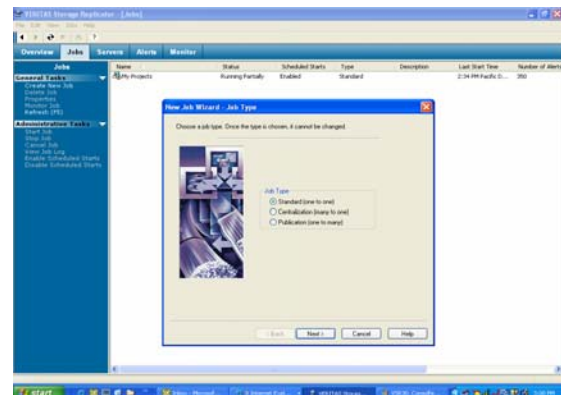
Replication Exec can be push installed from the central location out to each SQL, Exchange, or remote Windows server. Once installation has occurred, replication jobs can be centrally managed from a single console.

Simple to Use – New Backup Exec Integration

New Backup Exec™ SmartLink Technology integrates Replication Exec with Backup Exec. Now, Replication Exec's powerful alerting and comprehensive monitoring features can effectively be monitored from the Backup Exec console.



Replication Exec's intuitive administration console delivers centralized monitoring and control as well as real-time status of all active replication jobs.



Replication Exec's wizard-based installation allows users to quickly and easily install and configure replication jobs.

System Requirements

Windows XP, Windows 2000, Windows 2003 and Windows Storage Server.

Free Trial Evaluation

Download Replication Exec for a free trial at:
www.veritas.com/vre