

# Veritas CommandCentral™ Storage 5.1

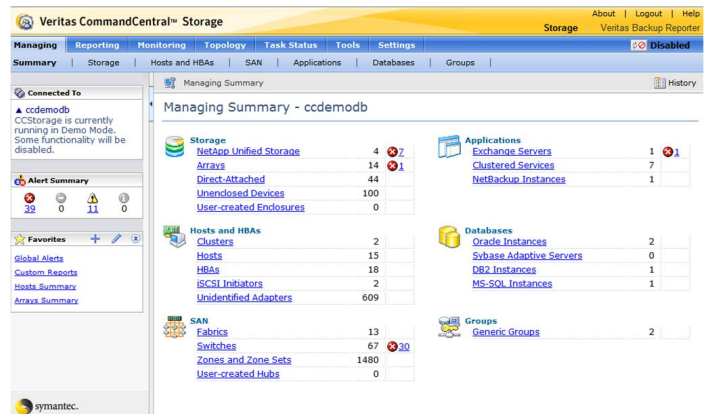
Centralized visibility and control across heterogeneous storage environments

## Overview

Veritas CommandCentral™ Storage is an industry standard-based, comprehensive software solution that seamlessly integrates storage capacity management, storage resource management, performance and policy management, and business reporting to ensure that the storage infrastructure is utilized properly and runs efficiently. Veritas CommandCentral Storage offers customizable policy-based management to automate notification, recovery, and other user-definable actions.

CommandCentral Storage introduces a highly centralized approach to managing storage, expanding the ability of IT organizations to meet the storage needs of a diverse set of applications and users.

CommandCentral Storage automatically discovers critical applications such as Oracle® databases and Microsoft® Exchange as well as infrastructure applications. This allows administrators to proactively manage applications and their associated physical, logical and virtual resources, ensuring effective service-level agreements across the entire data path. With a comprehensive understanding of the relationship between applications and their resources, administrators have complete visibility, control, and management.



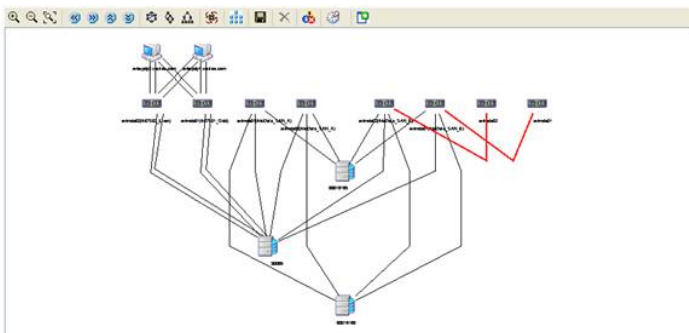
Centralized, web based user interface

- Achieve end-to-end visibility—Discover and visualize how applications map to the resources they consume across all elements in the data center, including servers, switches, and storage.
- Improve storage utilization—Implement prudent storage capacity management practices by reclaiming lost or wasted storage, forecast for current and future storage capacity requirements, and enable tiered storage to match data to the appropriate storage devices based on business requirements.
- Transform storage operations—Monitor and report on changes in the environment based on business, performance, or availability policies.
- Align with the business—Report on global resources across the enterprise based on customizable business views in one centralized console, implement service

levels, and charge back for storage services rendered to the business.

### Achieve end-to-end visibility

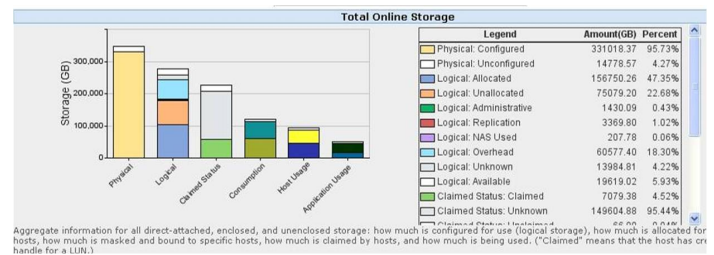
Understanding the paths from applications to the underlying physical, logical and virtual infrastructure is critical to ensure appropriate performance and availability levels. CommandCentral Storage presents the necessary view into the data path to provide full comprehension of how applications are spread across the physical and virtual disk resources for direct-attached storage, network-attached storage, and SAN-attached storage. This enables storage administrators to identify potential bottlenecks or failure points in a data path, regardless of complexity. CommandCentral Storage also provides this mapping from the array to the host, presenting insight into array-level events that may impact applications. This mapping is critical to being able to identify incorrect storage configurations that result in orphaned storage. End-to-end visibility not only ensures the performance of the data path, but it also provides information for storage reclamation.



End-to-end visibility from the topology map

### Improve storage utilization

Visibility of resource consumption in the data center is a top priority. Before analysis of the storage environment can be accomplished, IT professionals must be able to accurately track the availability and usage of resources. CommandCentral Storage provides visibility into current and historical disk usage to maximize the organization's utilization of storage assets. This information is critical not only in determining how much storage is currently available, but also in providing insight into any additional storage requirements. Visibility of metrics such as available resources and storage burn rates provide accurate forecasts for capacity planning and budgeting, while preventing excess storage purchases that lead to reduction of storage utilization levels.



Total on-line storage capacity report

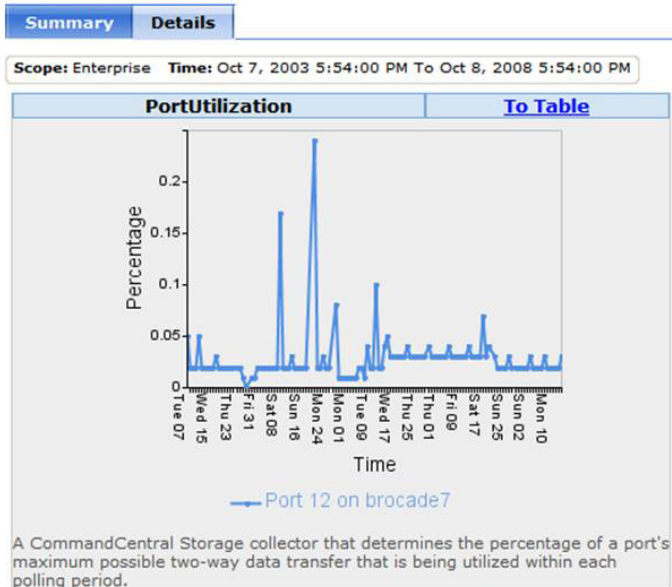
### Transform storage operations

Storage network complexity may result in undetected problems and changes. CommandCentral Storage monitors all of the necessary elements of the data path, including arrays, switches, HBAs, hosts, applications, and so on, with the industry-standard SMI-S specification. CommandCentral Storage monitors availability and environmental or space conditions, and

## Data Sheet: Storage Management Veritas CommandCentral™ Storage 5.1

automatically alerts the appropriate administrators when any of these variables are outside of set tolerances. Standardized processes reduce the time required for application deployment and change management. Presenting the necessary information required for hardware management in the context of the change process reduces both time and the possibility of errors. CommandCentral Storage provides the data necessary to make optimized management decisions while presenting a common interface for a majority of these management functions. Management becomes a standardized process as opposed to a specialized task. CommandCentral Storage is fully compliant with SMI-S, but it also provides deep integration (which SMI-S is not intended to do) with third-party storage providers to protect an organization's investment in hardware and training.

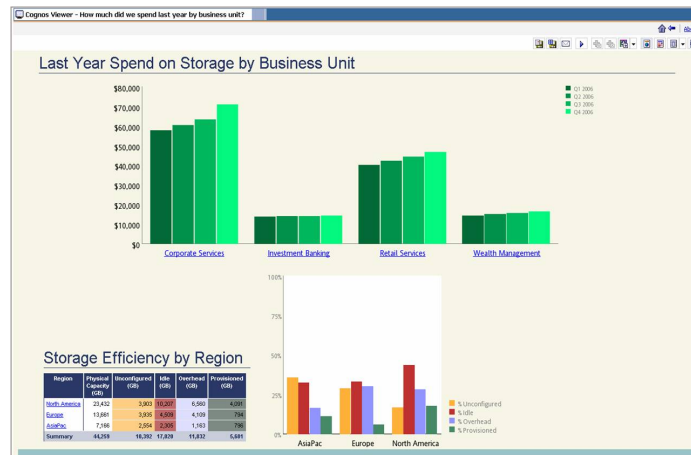
### Switch Port Performance Detail



Switch performance report

## Integrate with business processes

CommandCentral Storage aligns storage operations to the business by enabling global, customized enterprise reports of data center resources across multiple geographic locations. CommandCentral Storage provides a clear analysis of consumed and unconsumed storage resources mapped to the business and underlying applications, enabling organizations to implement prudent capacity planning practices. Additionally, in conjunction with CommandCentral Enterprise Reporter, CommandCentral Storage enables service-level reporting and chargeback for storage services delivered to the organization.



Customized business groupings of logical and physical components

## Industry standards support

CommandCentral Storage supports many industry standards, including SNMP and certification for the CIM/SMI-S 1.1 storage management standard that was originally created by Veritas and is now owned by the Storage Networking Industry Association.

### Additional Product Highlights

- Virtualization – Supports a full range of virtualization technologies including VMware, IBM SAN Volume Controller and HDS Universal Storage Platform
- Agent-less mode – Offered as an agent-less solution for quick time to value, easy deployment, configuration and maintenance
- Web-based interface—Offers an intuitive Web interface for a single management point for multiple SAN, NAS, and DAS environments
- Centralized storage management—Integrates storage resource management, performance and policy management, as well as SAN management
- Scalability—Scales to the largest data center environments and supports thousands of servers and multiple petabytes of storage capacity from one management server
- Performance monitoring – Provides historical performance information about components on the storage infrastructure to assist in identifying potential bottlenecks
- Role-based security—Incorporates variable secure access controls ranging from read-only to administrator
- File-level details—Provides details about file type, duplicate files, file create date, file last modified date and last access date, and free space
- Database reporting—Provides historical or real-time views plus future projections of database storage usage
- NetApp integration—Native integration provides NAS

storage information (quotas, qtrees, snapshots, etc.) as well as performance and health monitoring

- iSCSI support—Reports on iSCSI initiator's associated host, driver information, WWN, and firmware version
- Open database—Has a published database structure for full access and easy custom reporting
- Storage reporting—Incorporates a flexible reporting engine for scoping/filtering reports, changing report time frames, and automating the execution and delivery

---

### Supported operating systems

- IBM® AIX®
- HP HP-UX®
- Sun™ Solaris™
- Red Hat® Linux
- SUSE Linux
- Microsoft Windows®
- VMware®

## Data Sheet: Storage Management Veritas CommandCentral™ Storage 5.1

### *Visit Our Web Site*

<http://enterprise.symantec.com>

### *Contact Us Today*

Call toll-free 1 (800) 745 6054

### *To speak with a Product Specialist outside the U.S.*

For specific country offices and contact numbers, please visit our website.

### *About Symantec*

Symantec is a global leader in providing security, storage, and systems management solutions to help businesses and consumers secure and manage their information. Headquartered in Cupertino, Calif., Symantec has operations in more than 40 countries. More information is available at [www.symantec.com](http://www.symantec.com).

### *Symantec World Headquarters*

20330 Stevens Creek Blvd.

Cupertino, CA 95014 USA

+1 (408) 517 8000

1 (800) 721 3934

[www.symantec.com](http://www.symantec.com)

Confidence in a connected world.

