



## The SonicWALL PRO Series

NETWORK SECURITY

Dynamic Multi-function Network Security Appliances

- **Powerful re-assembly free deep packet inspection engine**
- **Real-time gateway anti-virus, anti-spyware, anti-spam and intrusion prevention**
- **Innovative SonicWALL Clean VPN™ technology**
- **Comprehensive application control**
- **Stateful high availability and load balancing**
- **Standards-based Voice over IP (VoIP)**
- **Secure distributed wireless LAN services**
- **Onboard Quality of Service (QoS) features**
- **Advanced security and networking features**

Organizations of all sizes rely on their networked infrastructure as the primary means of communication and productivity. These networks are under constant attack from a continually evolving array of threats that affect performance, communications and reliability. Securing data from external as well as internal threats across distributed architectures is challenging. Point products can provide additional layers of security but are costly, difficult to manage and ineffective against multi-pronged attacks and network resource misuse.

The SonicWALL® PRO Series solves these issues by combining multiple network and security functions including a deep packet inspection firewall, IPsec VPN, layered anti-virus, anti-spyware, intrusion prevention and Web content filtering capabilities into a single integrated appliance that is easy to manage and deploy. Based on a dynamically updateable platform, PRO Series appliances are automatically updated to ensure zero day protection against a variety of network and application threats. Optimized for advanced networking and ultra reliable operation, they are designed for mission-critical data and network communication deployments. At the core of every PRO Series appliance is SonicOS, SonicWALL's powerful operating system which provides policy-based firewall management over complex deployments and enables complete control over network traffic and application usage. The PRO Series delivers exceptional value and performance for organizations of all sizes, including branch offices, central sites, distributed enterprises and data centers.

The PRO Series features six models: PRO 1260, 2040, 3060, 4060, 4100 and 5060, designed to meet the network security needs for organizations of all sizes.

### Features and Benefits

**Powerful re-assembly free deep packet inspection engine** eliminates threats over unlimited file sizes and unrestricted concurrent connections, offering ultimate scalability.

**Real-time gateway anti-virus, anti-spyware, anti-spam and intrusion prevention** capabilities secure the network against a comprehensive array of dynamic threats including viruses, spyware, worms, Trojans, phishing attacks and software vulnerabilities such as buffer overflows.

**Innovative SonicWALL Clean VPN™** deep packet inspection architecture assures mobile user connections and branch office traffic are decontaminated to prevent vulnerabilities and malicious code from being introduced into the corporate network from remote connections.

**Comprehensive application control** prevents non-business traffic such as peer-to-peer and instant messaging applications at the administrator's discretion.

**Stateful high availability and load balancing** features maximize total network bandwidth and maintain network uptime, ensuring uninterrupted access to critical resources.

**Standards-based Voice over IP** capabilities provide the highest levels of security for every element of the VoIP infrastructure, from communications equipment to VoIP-ready devices such as SIP Proxies, H.323 Gatekeepers and Call Servers.

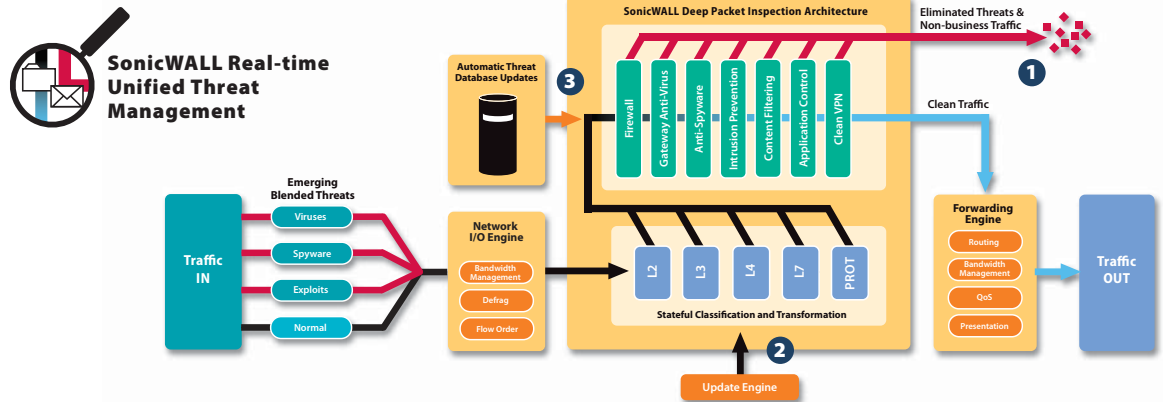
**Secure distributed wireless LAN services** enable the appliance to function as a secure wireless switch and controller that automatically detects and configures SonicPoints™, SonicWALL wireless access points, for secure remote access in distributed network environments.

**Onboard Quality of Service (QoS)** features use industry standard 802.1p and Differentiated Services Code Points (DSCP) Class of Service (CoS) designators to provide powerful and flexible bandwidth management that is vital for Voice over IP, multimedia content and business-critical applications.

**Advanced security and networking features** include 802.1q VLANs, enterprise routing support, WAN/WAN failover, zone and object-based management, inbound and outbound load balancing, advanced NAT modes and more, providing granular configuration flexibility and comprehensive protection.



Comprehensive, Integrated, Best-in-class Threat Protection



Best-in-class

threat

protection

in an

affordable,

easy-to-manage

appliance

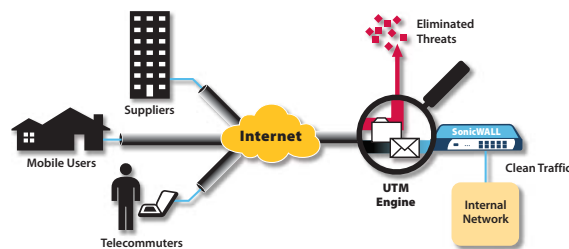
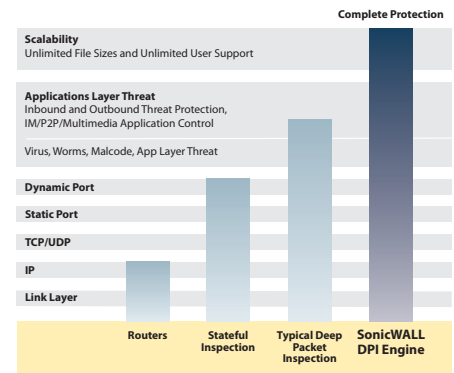
- 1 The deep packet inspection architecture in SonicOS inspects traffic to ensure network risks such as viruses, worms, Trojans, spyware, phishing attacks, emerging threats and Internet misuse are properly prevented.
- 2 The uniquely scalable approach scans traffic in real-time as it moves through the engine without having to stall traffic in memory. This allows threats to be identified and eliminated over unlimited file

sizes and unrestricted concurrent connections without any interruptions. No other solution offers the same scalability and limitless protection.

- 3 Because threats are always evolving, dynamic network protection is accomplished through automated and continuous security updates, ensuring the PRO Series appliance can prevent emerging threats without requiring any administrator intervention.

Unrestricted Threat and Application Protection

The SonicWALL PRO Series' deep packet inspection engine is designed for ultimate scalability and performance, delivering a complete range of protection from the network to the application layer. With its ability to scan unlimited files sizes and an unlimited number of connections, the PRO Series has no equal, offering the most comprehensive protection available. In addition, the PRO Series affords administrator control over various network applications like Skype, instant messaging and peer-to-peer programs, closing and scanning through some of the largest security holes in today's networks.



SonicWALL Clean VPN

The PRO Series includes innovative SonicWALL Clean VPN technology which prevents vulnerabilities and malicious code by decontaminating mobile user connections and branch office traffic before they enter the corporate network. Based on a real-time deep packet inspection engine, the PRO Series eliminates viruses, worms, Trojans, spyware and malicious code without any user intervention.

Centralized Policy Management

The PRO Series can be managed using the SonicWALL Global Management System (GMS), which provides flexible, powerful and intuitive tools to centrally manage configurations, view real-time monitoring metrics and integrate policy and compliance reporting.



## Flexible, Customizable Deployment Options - PRO Series At-A-Glance

### Secure Switching Series

The **PRO 1260 Series** is the entry-level PRO Series network security appliance, combining intelligent switching with deep packet inspection firewall into a single, easy-to-deploy and manage solution, meeting the needs of small sized networks. It offers the flexibility to be configured either as an unmanaged switch under SonicOS Standard or as a managed LAN switching platform through the powerful SonicWALL PortShield architecture, using SonicOS Enhanced.

### Flexibility Series

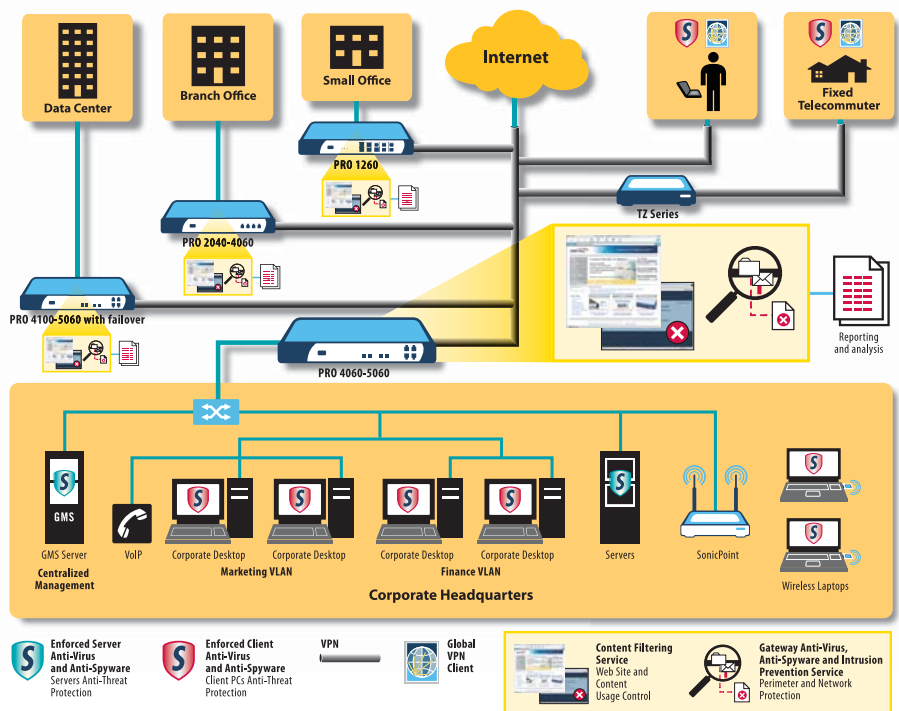
The **PRO 2040** is a flexible network security appliance, ideal for small and branch offices. Featuring up to four configurable 10/100 Ethernet interfaces, advanced firewall features and intuitive overall management, the PRO 2040 offers a perfect blend between value and performance.

The **PRO 3060** is a robust network security appliance designed to meet the growing needs of both branch office to mid-sized networks. Featuring twice the processing power of the PRO 2040 and greater interface density (six vs. four fast Ethernet interfaces), it allows for more granular control and flexible network and security policy design.

### Performance and Scalability Series

The **PRO 4060** is a multi-service network security appliance with mid-range performance and high-end features, designed to meet the critical security requirements of medium-to-large sized networks. Six fast Ethernet interfaces allow for greater network configuration flexibility.

The **PRO 4100** is a flexible, ultra-high speed security appliance that delivers real-time internal and external network protection. Ten Gigabit Ethernet interfaces provide ample port density to segment the network into multiple trusted zones. Comprehensive security



with advanced networking and configuration flexibility features makes the PRO 4100 an ideal security appliance for central site deployments and distributed environments.

The **PRO 5060** is SonicWALL's flagship network security appliance that features multi-gigabit performance security platform with ultimate scalability, targeted for enterprises and data center environments. Featuring a multi-processor ultra-high performance design, the PRO 5060 offers configuration flexibility through either the combination of six copper Gigabit or two fiber/four copper Gigabit Ethernet interfaces.

## Subscription Services

Each PRO Series network security appliance\* supports an expanding array of dynamic subscription-based services and software designed to integrate seamlessly into any network.



**Gateway Anti-Virus, Anti-Spyware and Intrusion Prevention Service** delivers intelligent, real-time network security protection against sophisticated application layer and content-based attacks including viruses, spyware, worms, Trojans and software vulnerabilities such as buffer overflows.



**Enforced Client and Server Anti-Virus and Anti-Spyware** delivers comprehensive virus and spyware protection for laptops, desktops and servers using a single integrated client and offers automated worldwide enforcement of anti-virus and anti-spyware policies, definitions and software updates.



**Content Filtering Service** enforces protection and productivity policies by employing an innovative rating architecture, utilizing a dynamic database to block over 55 categories of objectionable Web content.



**ViewPoint** is an easy-to-use Web-based reporting tool whose comprehensive reporting capabilities provide administrators instant insight into the health of their network including performance and security. Delivered through a series of historical reports using dashboards and detailed summaries, ViewPoint helps organizations of all sizes track Internet usage, fulfill regulatory compliance requirements and monitor the security status of their network.



**Dynamic Support Services** are available as 8x5 or 24x7 support depending on customer needs. Features include crucial updates and upgrades, the finest technical support, access to extensive electronic tools and timely hardware replacement to help organizations make the most of their SonicWALL investment.

\*PRO 4100 and 5060 ships with one-year of free Gateway Anti-Virus, Anti-Spyware and Intrusion Prevention Service

# Specifications

## SonicWALL PRO Series

	PRO 1260	PRO 2040	PRO 3060	PRO 4060	PRO 4100	PRO 5060
<b>Customer Segment</b>	Small business, branch office	Small business, branch office, remote office	Small-to-medium enterprises, branch offices	Small-to-medium enterprises, regional offices	Mid-size enterprises, distributed and central sites, data centers	Medium-to-large enterprises, data centers
<b>SonicOS Supported</b>	Standard/Enhanced	Standard/Enhanced	Standard/Enhanced	Enhanced	Enhanced	Enhanced
<b>Users/Nodes</b>	Unrestricted	Unrestricted	Unrestricted	Unrestricted	Unrestricted	Unrestricted
<b>SonicPoints Supported (Maximum)</b>	8*	64*	96*	96	128	128
<b>Authenticated Users (Maximum)</b>	150	250	300	1,000	1,500	2,500
<b>DHCP Leases</b>	1,024	1,024	1,024	4,096	4,096	4,096
<b>High Availability</b>	Not supported	Active/Standby	Active/Standby Statesync*	Active/Standby Statesync	Active/Standby Statesync	Active/Standby Statesync

Performance Summary						
<b>Firewall Throughput (Maximum)**</b>	90 Mbps	200 Mbps	290 Mbps	300 Mbps	700 Mbps	2.8 Gbps
<b>Connections (Maximum)</b>	6,144	32,768	131,072	524,288	600,000	750,000
<b>VPN Throughput (Maximum)***</b>	30 Mbps	50 Mbps	75 Mbps	190 Mbps	400 Mbps	700 Mbps
<b>IPS Throughput (Maximum)</b>	7 Mbps	40 Mbps	120 Mbps	160 Mbps	380 Mbps	400 Mbps
<b>Full UTM Throughput (Maximum)****</b>	5 Mbps	25 Mbps	100 Mbps	110 Mbps	220 Mbps	240 Mbps
<b>Concurrent UTM Sessions</b>	6,000	16,000	64,000	96,000	256,000	256,000
<b>New UTM Sessions/Second</b>	400	2,500	4,000	5,000	12,000	15,000
<b>Site-to-Site VPNs (Maximum)</b>	25	50	500/1000*	3,000	3,500	4,000
<b>Client-to-Site VPNs (Maximum)</b>	50	50/100*	500	3,000	4,500	6,000
<b>Bundled VPN Clients</b>	5	10	25	1,000	1,500	2,000

Physical Specifications						
<b>Form Factor</b>	1U rack-mountable					
<b>Dimensions (H x W x D)</b>	17.00 x 10.00 x 1.75 in	17.00 x 10.00 x 1.75 in	17.00 x 13.00 x 1.75 in	17.00 x 13.00 x 1.75 in	17.00 x 16.25 x 1.75 in	17.00 x 16.25 x 1.75 in
<b>Weight</b>	7.15 lbs 3.24 Kg	8.5 lbs 3.86 Kg	13 lbs 5.9 Kg	13 lbs 5.9 Kg	15.05 lbs 6.83 Kg	15.55 lbs 7.05 Kg
<b>WEEE Weight</b>	7.8 lbs 3.5 Kg	8.8 lbs 4.0 Kg	13 lbs 5.9 Kg	13 lbs 5.9 Kg	15.5 lbs 7.0 Kg	PRO 5060c 16.0 lbs/7.3 Kg PRO 5060f 16.5 lbs/7.5 Kg
<b>Network Interfaces</b>	27 Fast Ethernet	4 Fast Ethernet	6 Fast Ethernet	6 Fast Ethernet	10 Gigabit Ethernet	6 Gigabit Ethernet 2 SC Fiber 4 Gigabit Ethernet
<b>VLAN Interfaces</b>	25 Portshield*	25*	50*	200	300	400

Regulatory and Standards Compliance	
<b>Regulatory Compliance</b>	FCC Class A, ICES Class A, CE, C-Tick, VCCI Class A, BSMI Class A, MIC, NOM, UL, cUL, TUV/GS, CB

Environment						
<b>Environment</b>	40-105° F					
<b>MTBF</b>	7.7 years	11.2 years	9.2 years	9.2 years	7.0 years	6.8 years
<b>Power Input</b>	100 to 240 VAC, 60-50 Hz, 1A	100 to 240 VAC, 60-50 Hz, 4A	100 to 240 VAC, 60-50 Hz, 1.5A	100 to 240 VAC, 60-50 Hz, 1.5A	100 to 240 VAC, 60-50 Hz, 6.3A	100 to 240 VAC, 60-50 Hz, 6A
<b>Max Power Consumption</b>	24 W	65 W	143 W	143 W	163 W	120 W
<b>Total Heat Dissipation</b>	81.8 BTU	241 BTU	530 BTU	530 BTU	556 BTU	409 BTU

\*Requires SonicOS Enhanced

\*\*Testing Methodologies: Maximum performance based on RFC 2544 (for firewall). Actual performance may vary depending on network conditions and activated services

\*\*\*VPN throughput measured using UDP traffic at 1280 byte packet size adhering to RFC 2544

\*\*\*\*Throughput measured using HTTP throughput test

### SonicOS Standard

SonicOS Standard is the industry leading UTM Firewall solution that delivers strong network security while reducing administrative complexity and overhead.

### SonicOS Enhanced

SonicOS Enhanced integrates dynamic security, network intelligence, productivity control, client identity and integrity features for networks of all sizes.

### SonicWALL Value-added Security Services

SonicWALL Internet security appliances integrate seamlessly with an expanding array of value-added security services to provide a comprehensive security solution. Gateway anti-virus, anti-spyware, intrusion prevention, desktop-enforced anti-virus and content filtering can be enforced over both the wired and wireless LANs. For more information on SonicWALL security services, please visit our Web site at <http://www.sonicwall.com/products/vpnsoft.html>.

### SonicWALL, Inc.

1143 Borregas Avenue  
Sunnyvale CA 94089-1306

T +1 408.745.9600  
F +1 408.745.9300

[www.sonicwall.com](http://www.sonicwall.com)



SonicWALL PRO 1260 (US/Canada)  
01-SSC-5885

SonicWALL PRO 2040 (US/Canada)  
01-SSC-5700

SonicWALL PRO 3060 (US/Canada)  
01-SSC-5365

SonicWALL PRO 4060 (US/Canada)  
01-SSC-5370

SonicWALL PRO 4100 (US/Canada)  
01-SSC-5400

SonicWALL PRO 5060c (US/Canada)  
01-SSC-5381

SonicWALL PRO 5060f (US/Canada)  
01-SSC-5382