

Altiris™ Asset Management Suite 7.0

Gain control of IT assets: Track, act, and automate

Overview

IT organizations are challenged with increasing complexity with hardware, software, and their agreements with vendors. To avoid potential risks, unreliable asset data, and reduced end-user productivity, IT organizations are working to take charge of managing IT assets. Increase your negotiating capability and reduce liabilities with greater visibility into vital data around your assets: key dates, contracts, and usage patterns.

Altiris™ Asset Management Suite from Symantec maximizes existing IT investments by actively eliminating unnecessary costs, managing contracts, aligning service resources with ITIL standards, and accurately measuring asset total cost of ownership (TCO).

Asset management trends

Business drivers for asset management include:

- Accurate budgeting
- Managing change through mergers, transfers and reorganizations
- Compliance demands
- IT alignment with business

IT directors and managers are working to run IT as a business. Key to accomplishing that goal is increasing the accountability for tracking assets from procurement to disposal to deliver the best value for the business. With an automated asset management system you can confidently determine the right balance between cost, performance, and risk with IT assets.

Faced with the pressures to deliver the right service level, at the right cost, with the best quality, better decisions are made with accurate records.



Gain control of IT assets

Track—discover, import, and validate software against a comprehensive software catalog

Act—harvest funds from overspent licenses, true up for audits, and report costs throughout the asset lifecycle

Automate—automate common asset procedures to actively manage your assets

Gain Control of IT assets

Disparate departments and processes are united through the common repository, console, and process automation capabilities. By actively managing the entire asset lifecycle, Asset Management Suite helps organizations eliminate unnecessary software and hardware costs, proactively manage vendor contracts, and align resources to ensure IT investments are optimized and business-aligned.

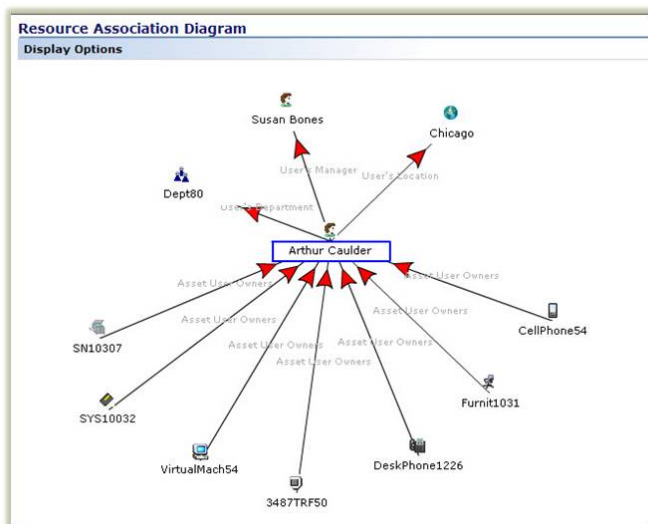
The consolidated approach in Asset Management Suite significantly reduces implementation time and costs, allowing your organization to realize a faster mean-time to value and focus on value-add initiatives.

Track

Easily discover and track comprehensive hardware information, installed software packages, and OS settings for all IT assets throughout their lifecycle.

- **Effectively manage enterprise assets**—You need an accurate and current inventory of the hardware and software environment to manage your assets.
- **Organize software**—Intelligent software management organizes all software in a comprehensive software catalog with a combination of smart discovery, pre-populated commercial software data, and manually entered custom software.
- **Import existing data**—Asset Management Suite also supports importing existing data from other sources.
- **Track costs**—Track costs of hardware, software, and services and associate assets to cost centers.

Once assembled you can now manage and gain visibility into real-time asset information from a single source. This single source Configuration Management Database (CMDB) manages hierarchical relationships of assets, including assets to other configuration items, users, locations, departments, cost centers, and associated contracts.



Resource association diagram

Act

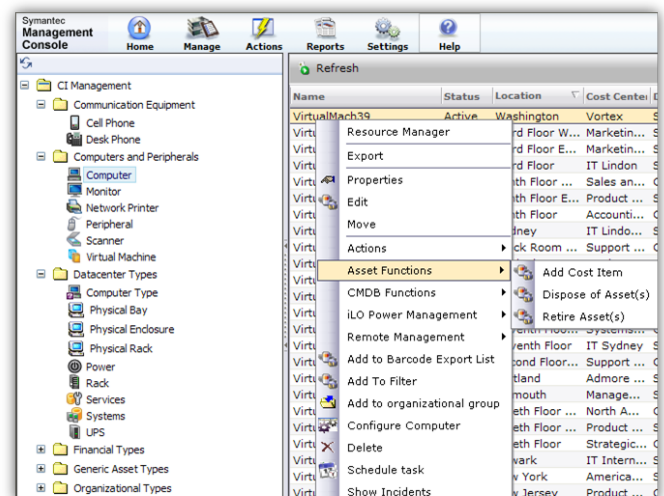
With all IT assets organized Asset Management Suite allows asset managers to accomplish everyday tasks as well as prepare for future initiatives. Every managed asset is actionable from the asset reports. Right-click actions include:

- Deliver software
- Uninstall software
- Request the user to confirm ownership

These quick tasks avoid the need for frequent desk-side or physical audits.

Flexible security views enable multiple departments and users to view or block access within their responsibility. Update common data that includes: software and hardware details, fixed asset information, contracts, and entitlements.

Reduce the risk associated with change by knowing the impact and providing the service desk with valuable information to accurately resolve incidents. With the costs associated and assets tracked, asset managers can articulate detailed cost analysis of each asset you own, further lowering TCO.



Actionable tasks

Automate

Asset Management Suite includes pre-built workflow templates that automate common tasks and business processes. Workflow efficiently collects information from the requestor, processes all required approvals and provides follow up notifications when tasks are not completed in a pre-determined amount of time. Here are some examples of new workflows:

- **Hardware and software request process**—automates steps for procuring equipment or software with links into financial systems, inventory, and company approvals.
- **Ownership verification**—allows IT to request asset owners to acknowledge possession of their resources.
- **Lease termination**—provides the steps for appropriately retiring assets and taking the specified steps to ensure the proper disposal and transfer of ownership or data to the new asset.

The Symantec™ Management Platform enables easy creation of workflows for other common asset management tasks. Automate tasks associated with other Symantec products to orchestrate processes across multiple Symantec solutions.

Hardware Request
Review Hardware Request

Request Details

Requester	Recipient	Business Justification
Name: Gentry Beckmann Phone: Email: gentryb@emi.test Location: Seattle	Name: Gentry Beckmann Phone: Email: gentryb@emi.test	Justification: New Hire New Hire: Tom Jones Extra Details: Starts on the first of next month.

Denied Items

Reason For Denial:	Cost:	Quantity:	Line Total:
Budget cut. Extra monitor not approved at this time. Name: New Hire Bundle Description:	\$603.93	1.00	\$603.93
Budget cut. Extra monitor not approved at this time. Name: New Hire Bundle			

Denied Items Total Cost: \$1,207.86

Approved Items

Name:	Non-Catalog Item:	Description:	Cost:	Quantity:	Line Total:
Dell Monitor	False	desc	\$999.99	1.00	\$999.99

Approved Items Total Cost: \$999.99

Buttons: Cancel, Cancel Request, Rework Request, Discard Denied Items

Workflow request details

New for Asset Management Suite 7.0

Here are the new features for Asset Management Suite 7.0.

Enhanced software management integration

Spend more time acting on data and less time gathering.
Asset Management Suite includes enhanced integration by linking license purchase, information with the software catalog.

Expanded asset management

Manage asset data with greater efficiency. Enhanced portal pages provide access to common asset management tasks from a single screen. Efficiently control access to data, reporting types, cascading organizational groups to reflect your business, and comprehensive resource association diagram views. Populate the CMDB with expanded support for handheld scanners.

Complete process automation

It's about people and process. Expand process automation to orchestrate the timely interaction between people and systems management with pre-built, routine asset management procedures. IT asset automated processes included with the suite are owner verification, hardware and software requests, and lease terminations.

Extending Asset Management Suite

You have implemented a proactive system for acting on accurate asset data using ITIL best practices with the installation of Asset Management Suite. Now you are prepared to take your IT environment to the next level by including the following options that complement the suite.

Altiris™ IT Management Suite—The industry's most comprehensive suite of IT lifecycle automation solutions is designed to help IT organizations manage, deploy, and support all IT assets.

Altiris™ Client Management Suite—Automates time-consuming and redundant tasks to reduce the effort and costs associated with deploying, managing, securing, and troubleshooting client systems so organizations can gain control of their IT environments.

Altiris™ Server Management Suite—Provides IT administrators with a comprehensive solution for managing physical and virtual servers. The suite provides solutions to provision, control, automate, and measure servers from a central console. With these tools you gain control of your servers, reduce service interruptions, and increase uptime.

Symantec™ Endpoint Protection—combines Symantec™ AntiVirus with advanced threat prevention to deliver unmatched defense against malware for computing assets. It seamlessly integrates essential security technologies in a single agent and management console, increasing protection and helping lower total cost of ownership.

Symantec™ Control Compliance Suite—Provides the most comprehensive view of risk and compliance posture with a combination of point-in-time controls assessment and real-time monitoring of risks and threats and offers an end-to-end coverage of the IT compliance lifecycle.

System requirements

- Microsoft® .NET Framework 3.5
- Microsoft® Internet Explorer® 7
- Microsoft® SQL Server® 2005 or better
- Microsoft® Windows® 2003 Server 32-bit version
- Microsoft® Windows Automated Installation Kit (AIK) for Windows® Server 2008

Microsoft® Windows® agent

- Microsoft® Windows® XP SP2 or later x64/x86
- Microsoft® Windows 2000 Workstation SP4 and rollups
- Microsoft® Windows Vista® SP1 (all additions)
- Microsoft® Windows® 7 Enterprise
- Microsoft® Windows® Server 2003, 2008

Linux® agent

- Red Hat® Enterprise Linux 3, 3 (x86_64), 4, 4 (x86_64), 5, 5 (x86_64)

- SUSE® Linux Enterprise Desktop 10, 10 (x86_64)

Mac® agent

- Mac® OS X 10.3.9 (PPC), 10.4.x (Universal binary), 10.5.x (Universal binary)
- Mac® OS X Server 10.3.9 (PPC), 10.4.x (Universal binary), 10.5.x (Universal binary)

UNIX agent

- AIX 5.2, 5.3, 6.1
- HP®-UX 11i & 11iv2 (PA-RISC), 11iv3 (PA-RISC/IA-64)
- Oracle® Solaris 9 (Sparc), 10 (Sparc & x64)

More information

Visit our website

<http://enterprise.symantec.com>

To speak with a Product Specialist in the U.S.

Call toll-free 1 (800) 745 6054

To speak with a Product Specialist outside the U.S.

For specific country offices and contact numbers, please visit our website.

About Symantec

Symantec is a global leader in providing security, storage and systems management solutions to help consumers and organizations secure and manage their information-driven world. Our software and services protect against more risks at more points, more completely and efficiently, enabling confidence wherever information is used or stored.

Symantec World Headquarters

350 Ellis St.

Mountain View, CA 94043 USA

+1 (650) 527 8000

1 (800) 721 3934

www.symantec.com